

# Lyme Regis Environmental Improvements Phase IV

# Lyme Regis Environmental Improvements Phase IV

Background to the landsliding and  
coastal erosion



2



DUNSTER



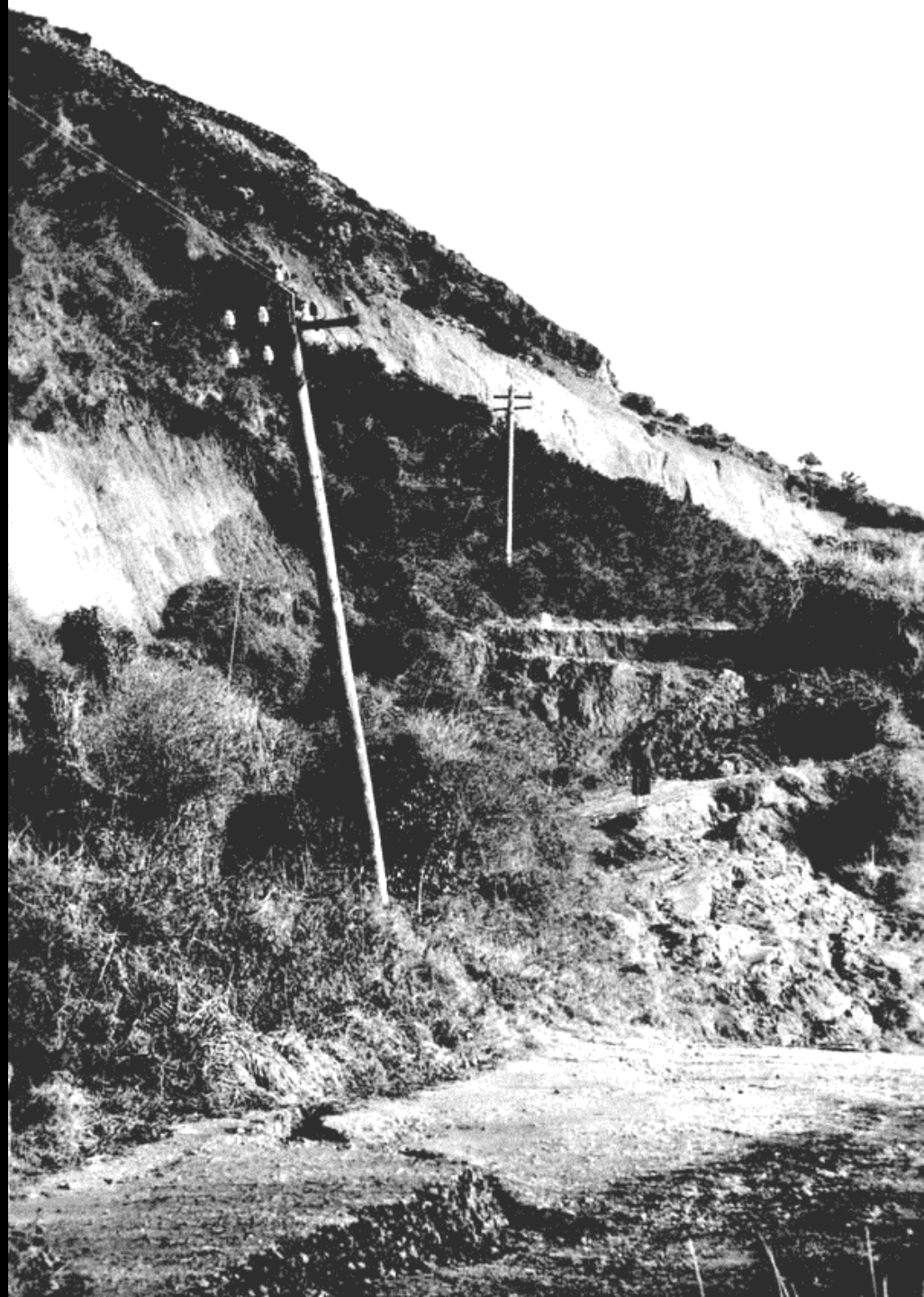






CHARM CITY









# IMPORTANT: LANDSLIP WATCH

## Help us to help you

As you will be aware, West Dorset District Council has been monitoring water levels and ground movements across Lyme Regis for some time. The work has prompted concerns about the potential for a landslip in this area following the recent wet weather.

As part of the Council's commitment to keeping residents informed a three-tier landslip warning system - similar to that employed by the Environment Agency in relation to flooding - is now being employed by the District Council.

**Level 1: Landslip Watch** – detailed observation of areas where monitoring has indicated a landslip is imminently possible

**Level 2: Landslip Warning** – informing occupants in areas where landslips are expected to occur and may affect their properties

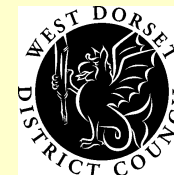
**Level 3: Severe Landslip Warning** – informing occupants where landslips will occur and will affect their properties

The Council has moved to Level 1 (Landslip Watch) in the area covered by Lower Cobb Road, Upper Cobb Road and Langmoor Gardens.

Engineers will be monitoring ground movements very closely over the coming days and weeks. Householders are asked to report any new cracks in structures and gardens as a matter of urgency on 01297 445051 during office hours, or on 01305 250365 outside office hours.

A pamphlet advising residents what they can do to help minimise the risk of landslips went to every home in Lyme Regis in mid October. A copy is attached to this leaflet.

The District Council's Civil Emergencies Plan has been produced to help manage the response to emergency incidents, and includes a section on responding to a serious landslip in Lyme Regis. Officers are now following the initial phase of this plan as a precaution.



### Lyme Regis News

An edition of the Bridport News

Established 1965 — Price 36p

FRIDAY, MAY 24, 1996

## CLIFF TOP IS ON THE SLIDE

□ Landslip cliff retreats 10 metres in just one month

### Determination needed, says Mayor Barbara

**GO-GETTING** Lyme Regis Mayor Barbara Avon listed property for the village for a third year in a row. She called for 12 months of determination which she said would result in the building of the new school and significant progress on other projects. She said she would like to see the Langmoor garden damage problem on the way to being solved. Other projects include the provision of a new bus shelter and a new bus stop. She said she would like to see the Langmoor garden damage problem on the way to being solved. Other projects include the provision of a new bus shelter and a new bus stop. She said she would like to see the Langmoor garden damage problem on the way to being solved. Other projects include the provision of a new bus shelter and a new bus stop.

done it will Latest offi  
● GEOL

## GARDENS HIT BY LANDSLIP



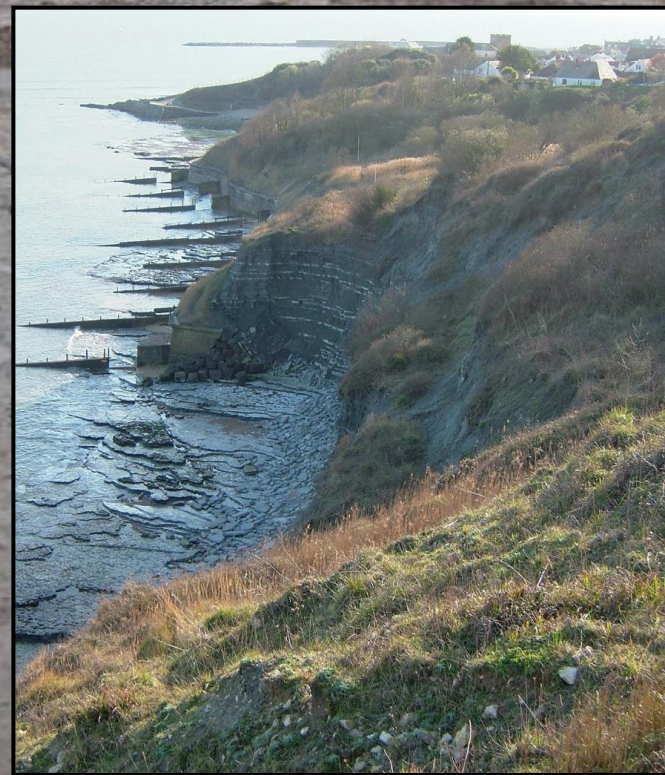
WEST Dorset District Council is monitoring a serious landslide at Lyme Regis in the gardens of Stile House, just off Pound Street. Part of the land, at the top of the steep wooded slope above Langmoor Gardens, broke away in a block measuring about 30 metres. This has subsided by up to two metres. WDDC's senior engineering geologist based in Lyme Regis, Geoff Davis, said: "The slip has caused significant damage

### EXCLUSIVE

By David Cozens  
authority taking such swift and positive action. The latest slide underlines the need to ensure that the stabilisation scheme for the area is the right one, based on all the research," he added. "It is vital for the

### Clock plan stopped by council

LYME'S Millennium Clock project has been put on hold by the planning authority which wants further discussions with the town council. The county adviser on historical monuments is violently opposed to the original Victorian clock suggestion, although he has not yet said why he doesn't like it," said Councillor Spencer Hogg who is co-ordinating the scheme. "I am hopeful of success with an amended scheme. In the meantime we are considering a postal referendum to see whether the chargepayers prefer the originally proposed Victorian timepiece or the design submitted. A majority would cost £42. At the time of going to press, only four letters concerning the clock had been received at the town















*Regis & Cobb*





