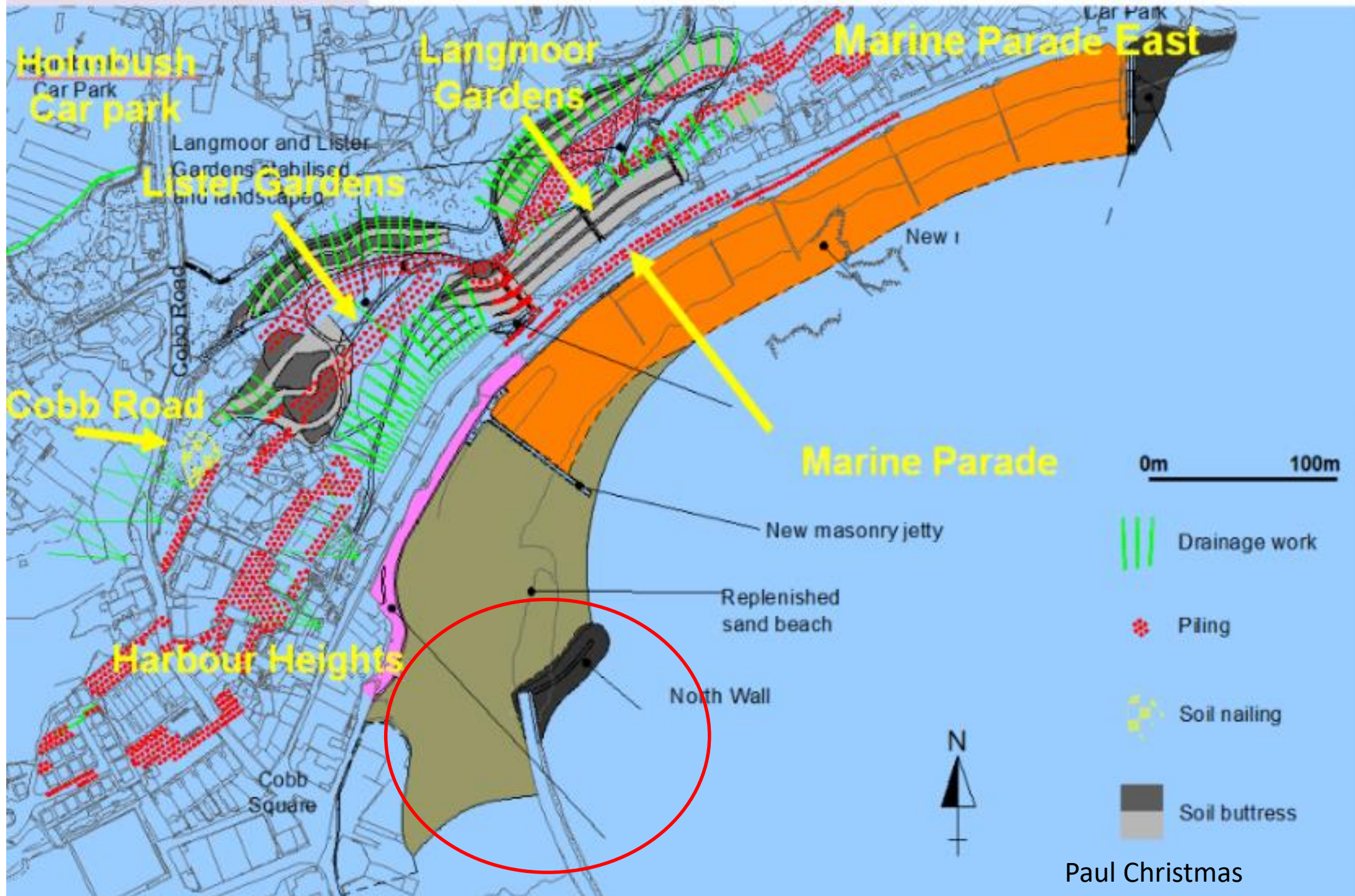


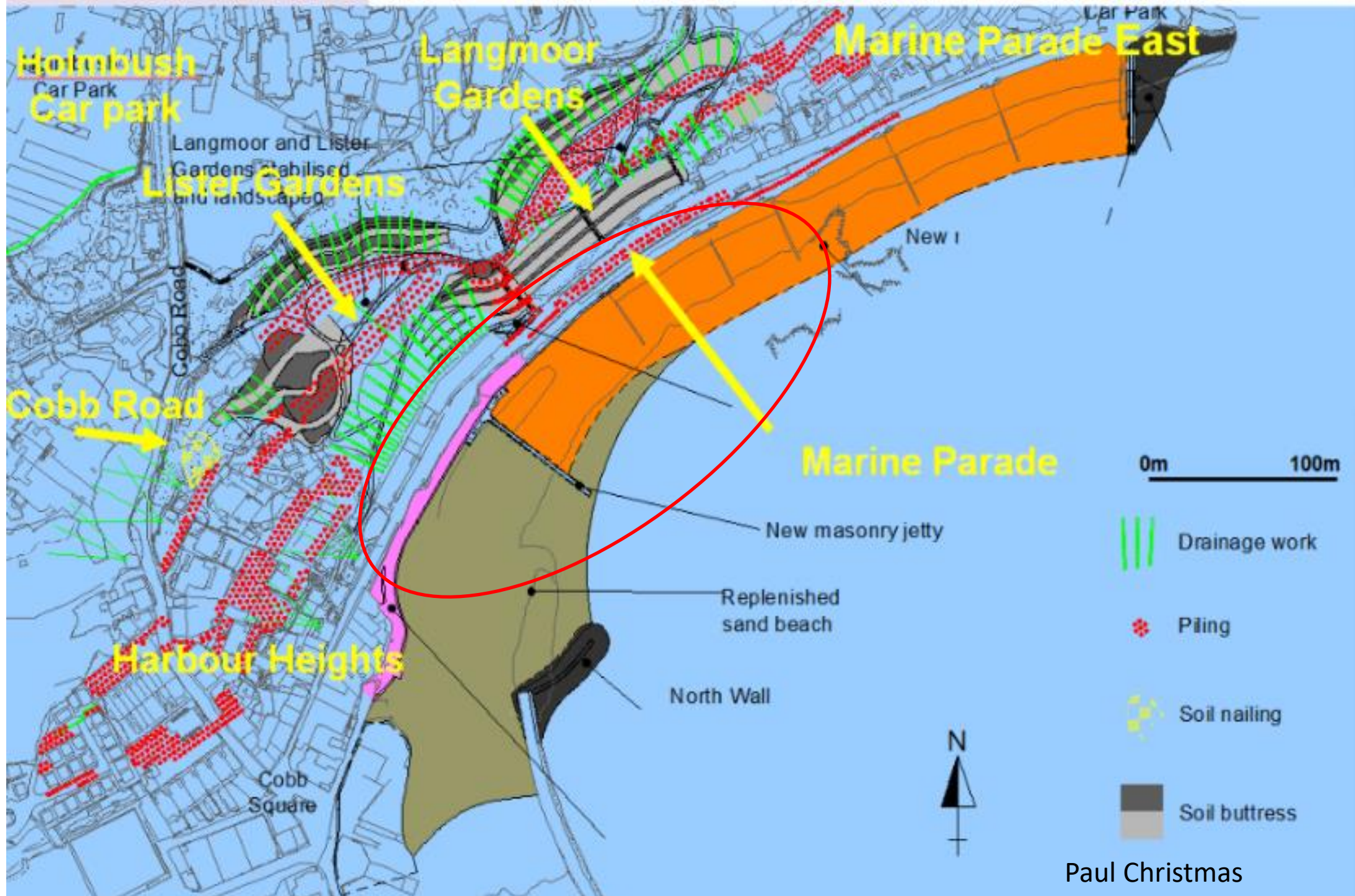


New sea wall  
with sewage  
pumping  
station and  
services inbuilt



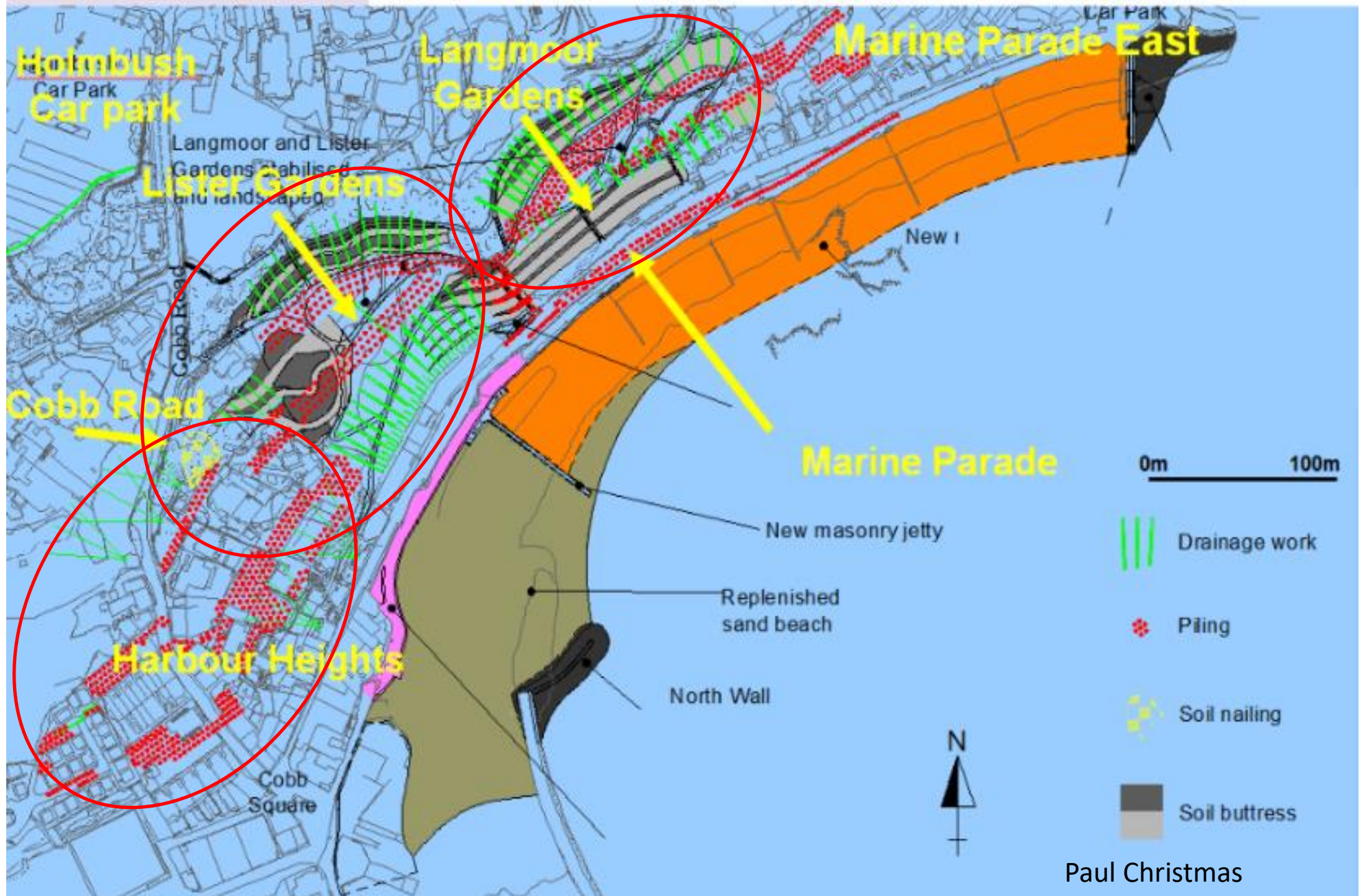


Cobb Gate to  
Harbour Beacon  
Rocks Extension

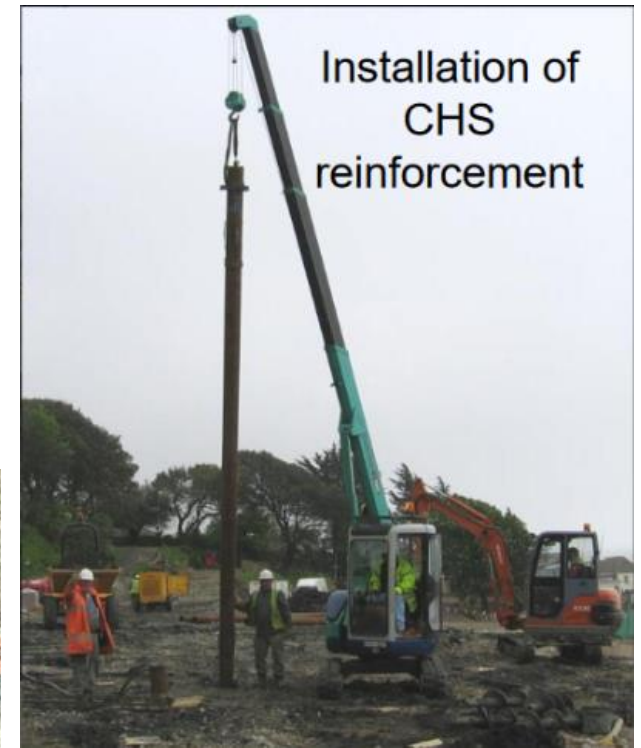


# Wave refracting sea wall and shingle beach replenishment. 70000 tonnes of shingle





## Slope Stabilization: Realigning, Drainage, Circular Hollow Sections, CHS (Piles) and Soil Nailing

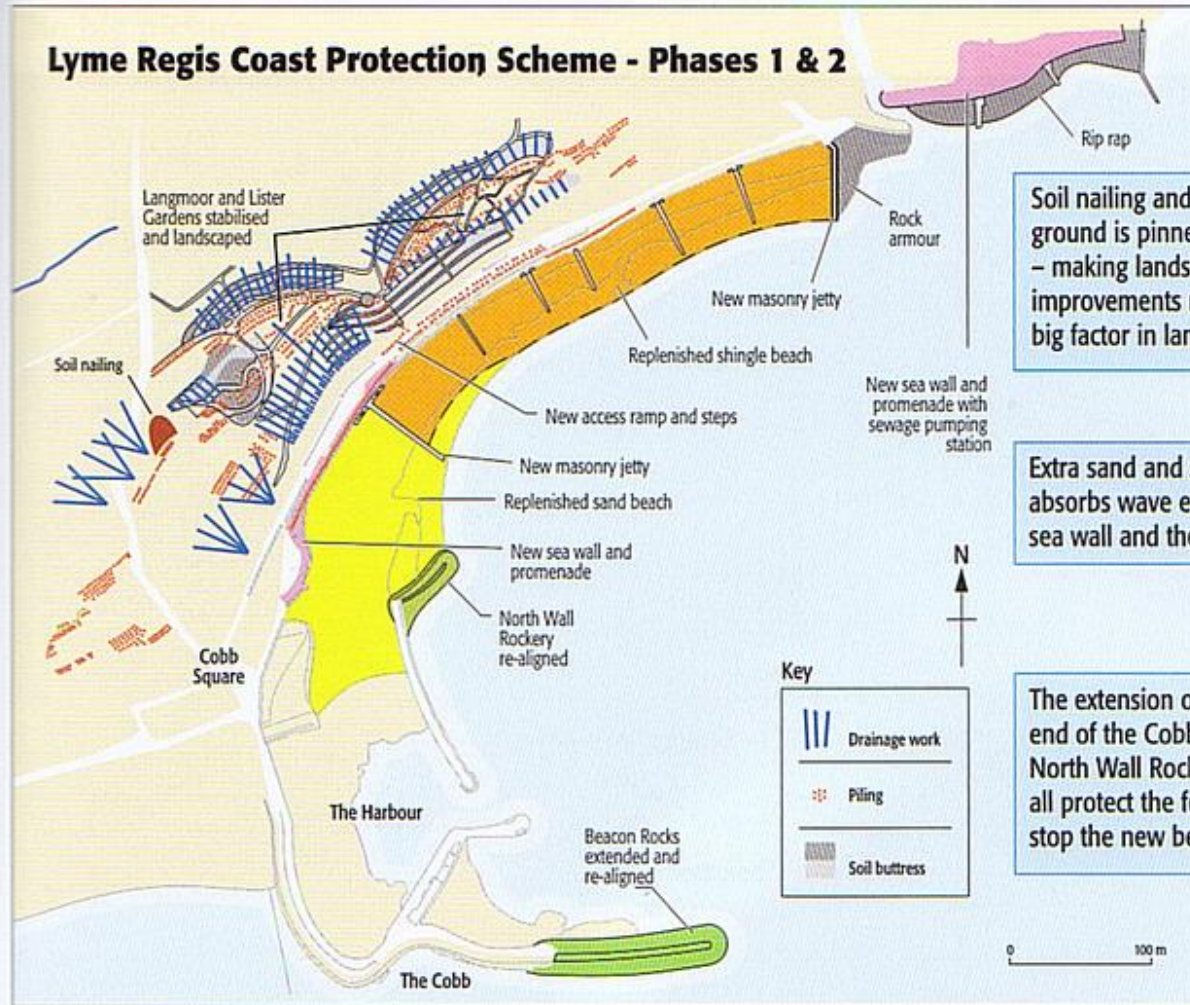




## Supporting Crib walls and retaining walls, terracing, soil nailing and landscaping



## Lyme Regis Coast Protection Scheme - Phases 1 & 2



Soil nailing and piling means unstable ground is pinned to firmer ground below – making landslips less likely. Drainage improvements remove water, which is a big factor in landslips.

Extra sand and shingle on the beach absorbs wave energy and so protects the sea wall and the foreshore from erosion.

The extension of the rock armour at the end of the Cobb, the re-alignment of the North Wall Rockery, and the new jetties all protect the foreshore from waves and stop the new beach from washed away.

### Benefits

- ◆ Long-term protection against destructive coastal erosion and landslips.
- ◆ More sand and shingle on the beach.
- ◆ It will be possible to walk along the whole beach even at high tide.
- ◆ A new promenade along the seafront.
- ◆ Calmer conditions for boats in the harbour and bay.
- ◆ Better access to the public gardens, including ramps for people using wheelchairs and prams.
- ◆ Re-landscaped public gardens with more walks.
- ◆ Improvements to roads.
- ◆ A more secure future for the town's people and businesses.